



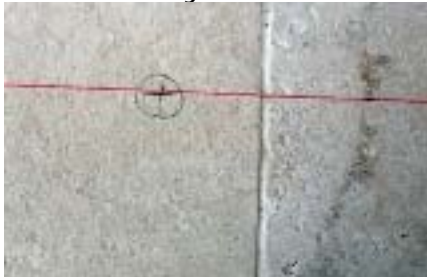
Frameless Installation Instructions

Thank you for purchasing a Prestige Pool Fence. All our fences come in kit form. Please read the instructions carefully and fully before proceeding and your installation will be hassle free and smooth.

1. Understand your set out. Once you know where all panels go and are happy with the set out you can begin to mark it out.



2. The string line is the most important part of the set out. This is the centre line of your fence. You need to string line all lengths of your fence as this is where you will mark your panel positions. Measure out and mark your panel positions by placing masking tape or similar where the edge of each panel starts and finishes. Once you are satisfied you can now mark your spigot positions with a large crosshair for core drilling – make sure you measure each spigot hole on your glass panels just to be sure.



3. Drill the holes using a core drill with a 75mm bit. All can be hired and most jobs can be drilled in a day. Measure 150mm on the drill bit and wrap some tape around as a visual



depth indicator.

You will need a template and this can be an old tile or thin plywood or



similar.

Position the template centrally over your crosshair mark, place feet either side of the drill and drill down approx 10mm. Remove the template and drill



down to the tape line on the core drill bit.

If you encounter reinforcing just ease off the pressure and let the core drill do all the work. Use a large screwdriver or similar and hammer to loosen and remove the cores being careful not to damage the edge of your tiles – the cover plates are 100mm diameter so will cover most chips etc.

4. All glass and hardware is checked before leaving the warehouse. Please check ALL components when you receive them and immediately report any damaged panels or hardware. We cannot accept any responsibility after delivery. Find a secure spot to fit the



spigots to the glass.

spread evenly to the edge of the glass panel works well. When moving the glass panels always be careful of the corners as these are the most venerable parts of the glass panel – slowly does it.

4 x milk crates with a soft cloth

5. Fit spigots to glass.



Don't forget to insert the shims to protect the glass, insert the black setting block for the glass to sit on, make sure the spigot is square when tightening the bolt and finally put the dress cover on and tape up onto the glass.

6. Fit the first panel. Best if you start at a corner or one end. Put two 55mm blocks of timber on the ground. Slowly lift the panel and lower down onto the blocks being careful not to knock the spigots when they go into the holes as this may bump them out of square. The spigots should be suspended in the hole – not touching the bottom of the hole.



You will need to support the glass.



we suggest a timber brace with a slot cut into it to fit over the glass with a shorter piece of timber screwed into the bottom of the brace for holding a full bag of cement or similar.

Tape a string line to the back edge of the glass panel and then run it across the top edge and down to the other end of the fence line. Adjust this panel so when you measure along the string line it will be 1205mm above ground level for the full length. This way you will know that when you install the other panels level with the first panel and the string line, they will be in a straight line and all above the minimum 1200mm requirement. The height can be adjusted using plastic shims or similar on the timber blocks.

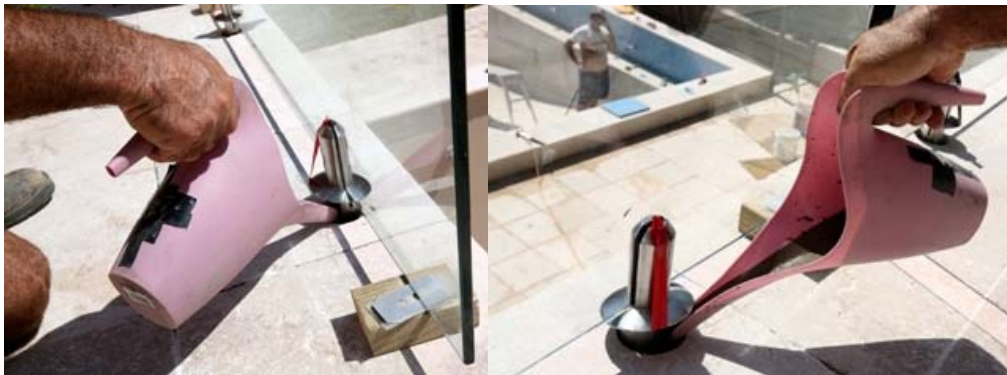


When you are happy with the position of the first panel you can mix the high strength grout. We only recommend Epirez quick set grout or



Bostic Techflow HES grout.

These are available from specialist hardware stores. **Never** use **quick set cement** or similar cement products. Your fence **WILL** fail using these products.



Using an open top plastic watering container, mix the grout to a consistency of between a milkshake and thickshake. Because the high strength grout contains granules you will need to continue stirring while pouring the grout into the hole. Wash all equipment immediately after use.

The grout will set to approximately 30 MPA in 1 hr – a lot quicker in hot weather. You can now start installing the remaining panels. You can use this first panel as a support panel.



Make sure the panel the gate hangs off and the panel the gate closes onto are level and square.

7. Hanging the gate. Attach the hinges to the gate (remove the tension pin in the hinge first) and then place the gate in the opening on 55mm blocks of timber. Adjust height with shims. Tip: adjust the latch side of the gate 3 to 5mm higher so when you remove the support blocks it finishes level with the latch panel. After fitting the latch re tension the hinges so gate closes from any open position. Don't over tension. Check the tension every 6 months.

Please see our maintenance page for care of your glass fence.